



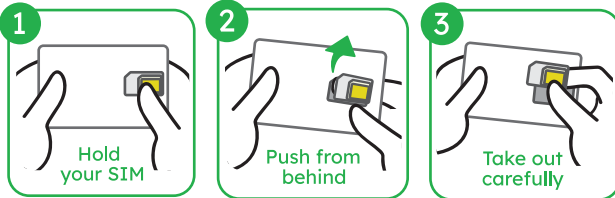
# Let's activate your SIM card & connect with your loved ones!



TAG VNM  
IDN NPL

## 1 Install SIM card

### 1. Take out your SIM card carefully



### 2. Insert your SIM card

- 1 Turn off your device
- 2 Insert your SIM card in your device
- 3 Turn on your device again & complete

## 2 Do APN settings

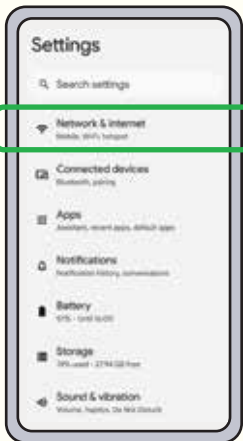
### iOS

Scan QR /



- 1 Connect your device to the internet.
- 2 Download the APN profile by scanning the QR code.
- 3 Enable the data by going to "Settings," "Cellular," and enable "Mobile data communication."

### Android



APN	Plus.4g	Password	4g
Username	Plus	Authentication type	CHAP

- 1 Go to your settings, then "Network & internet" and tap on "Mobile network." \*If "Network & internet" is not displayed, type in "APN" or "Access point names" in the search bar at the top.
- 2 Tap on "Access Point Names," then "New APN" or "+" from the top right.
- 3 Input the APN settings details as shown in the chart above and save it.
- 4 Please turn off the Wi-Fi on your device, turn on "Mobile Data Network" and test out your connection.



< Still having issues? See our troubleshooting guidelines.

[www.smilesconnect.com](http://www.smilesconnect.com) [support.jp@smilesconnect.com](mailto:support.jp@smilesconnect.com)